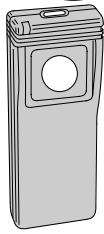


TX-91 TX-92 TX-94



TX-91

SUPERVISED DIGITAL SECURITY TRANSMITTERS

Operation Instructions

Linear

(619) 438-7000 • FAX (619) 438-7043
USA & Canada (800) 421-1587 & (800) 392-0123
Toll Free FAX (800) 468-1340

DESCRIPTION The TX-91, TX-92 and TX-94 are supervised, digitally-coded radio transmitters designed for remote control and emergency applications. Each transmitter can be activated by pressing the pushbutton(s) on the front or by pressing the small pushbutton on the top. **To send a complete signal, press the transmitter button for a minimum of 2 seconds.** The bright red LED will light as the transmitter is activated. A belt holder and pocket clip are supplied to attach to the back of the transmitter. A cover plate is also provided to conceal the top pushbutton if required.

The transmitters are supervised for low battery, alarm and status reporting. **The TX series transmitters are compatible with any Linear SX format supervised security receiver.** The transmitter sends hourly status reports. A test report can be sent by pressing a hidden button on the rear of the transmitter.

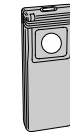
Coding switches are not required or used in the TX series transmitters. Each transmitter is pre-coded at the factory to a unique code. With the SX format, there are more than sixteen million codes possible.

The transmitter is powered by two self-contained type 2032 3-volt lithium batteries (included). When the batteries voltage gets low, a low battery report is sent with any alarm, test or status report to notify the receiver. The red LED will blink when the transmitter is activated with low batteries.

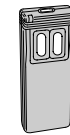
TX-91 - Two-channel transmitter with a button on the front and the top (each button performs a separate function).

TX-92 - Three-channel transmitter with two buttons on the front and one button on the top (each button performs a separate function).

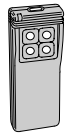
TX-94 - Five-channel transmitter with four buttons on the front and one button on the top (each button performs a separate function).



TX-91

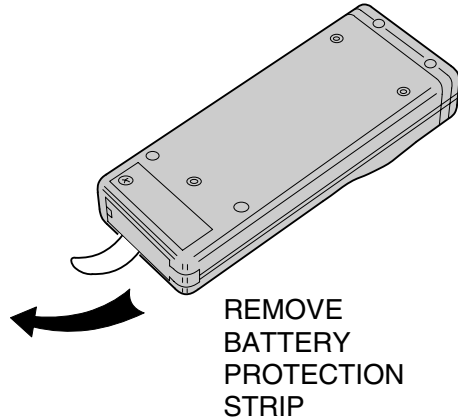


TX-92



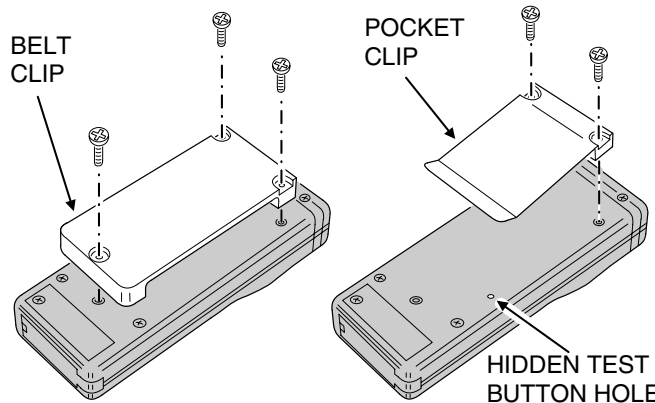
TX-94

STEP 1 Remove battery protection strip. Remove the plastic battery protection strip before using transmitter.

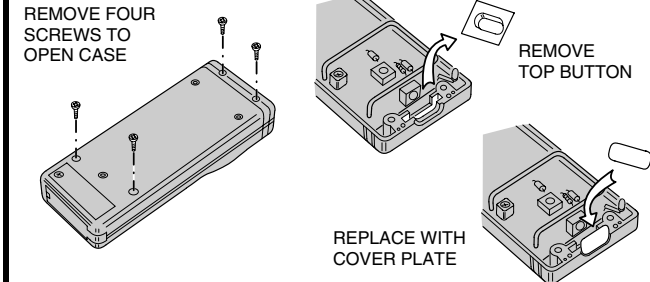


REMOVE BATTERY PROTECTION STRIP

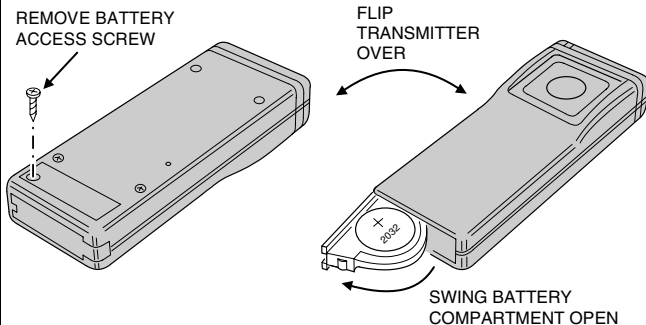
STEP 2 Optional belt or pocket clip installation. The belt clip or pocket clip can be installed by attaching it to the rear of the transmitter with the screws provided.



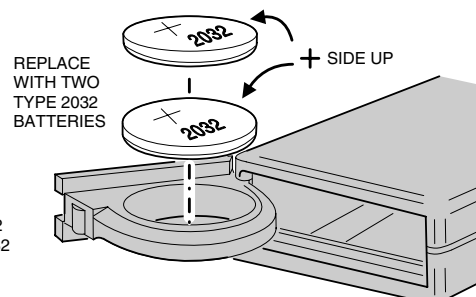
STEP 3 Optional top button cover installation. The top transmitter button can be concealed by installing the top button cover. Open the transmitter case by removing the four rear case screws (don't remove the battery access screw). Remove the top button plastic piece. Insert the top button cover with the textured side facing out. Close the transmitter case and insert the four case screws. Test transmitter for proper operation.



STEP 4A Opening battery compartment. To access the transmitter's batteries, remove the battery access screw on the back of the unit. Flip the unit over so that the front is facing you. Use a small screwdriver to open the battery compartment.



STEP 4B Replacing transmitter batteries. Replace the two batteries with two type 2032 lithium batteries or equivalent. The batteries stack on top of each other with the (+) sides facing the front of the transmitter. Replace with new batteries, then close the battery compartment. Replace battery access screw and test transmitter.



REPLACEMENT BATTERIES:
DURACELL DL2032
EVEREADY CR2032
PANASONIC CR2032
OR
TOSHIBA CR2032

LINEAR LIMITED WARRANTY

This Linear product is warranted against defects in material and workmanship for twelve (12) months. The Warranty Expiration Date is labeled on the product. **This warranty extends only to wholesale customers who buy direct from Linear or through Linear's normal distribution channels. Linear does not warrant this product to consumers.** Consumers should inquire from their selling dealer as to the nature of the dealer's warranty, if any. **There are no obligations or liabilities on the part of Linear corporation for consequential damages arising out of or in connection with use or performance of this product or other indirect damages with respect to loss of property, revenue, or profit, or cost of removal, installation, or reinstatement.** All implied warranties, including implied warranties for merchantability and implied warranties for fitness, are valid only until Warranty Expiration Date as labeled on the product. **This Linear Corporation Warranty is in lieu of all other warranties express or implied.**

For warranty service on Linear equipment return product, at sender's expense to:
Linear Corporation Repairs Department
2580 Pioneer Avenue, Suite C
Vista, CA 92083

IMPORTANT !!!

Linear radio controls provide a reliable communications link and fill an important need in portable wireless signalling. However, there are some limitations which must be observed.

For U.S. installations only: The radios are required to comply with FCC Rules and Regulations as Part 15 devices. As such, they have limited transmitter power and therefore limited range.

A receiver cannot respond to more than one transmitted signal at a time and may be blocked by radio signals that occur on or near their operating frequencies, regardless of code settings.

Changes or modifications to the device may void FCC compliance.

Infrequently used radio links should be tested regularly to protect against undetected interference or fault.

A general knowledge of radio and its vagaries should be gained prior to acting as a wholesale distributor or dealer, and these facts should be communicated to the ultimate users.